

Tel: 281-576-1634  
10330 Lake Rd. Bldg. J  
Houston, TX 77070  
Email: info@bayouland.org



for immediate release: Tuesday, September 10<sup>th</sup>, 2013

## **PRESS CONFERENCE ON THE PRAIRIE!**

**TODAY**

**Sept. 10th**

**For**

**Prairie Good News!**

**Deer Park Prairie**

**6:00 p.m.**

**1222 E. Purdue Ln.**

**Deer Park, TX**

(map on second page)

The most successful conservation land fund drive of its kind ever launched in Texas was completed before final deadline thanks to more than 1,000 donors.

Please join Bayou Land Conservancy, with its prairie partners, the Native Prairies Association of Texas, Katy Prairie Conservancy and the Houston Chapter of the Native Plant Society of Texas, and donors to this campaign this evening. We'll introduce the soon-to-be previous landowner and share the details of the permanent protection of the 53-acre "Platinum-quality Prairie".

Then join us if you can at the Monument Inn in La Porte at 7 as we celebrate the protection of this prairie – that all the media with your coverage - helped us achieve!

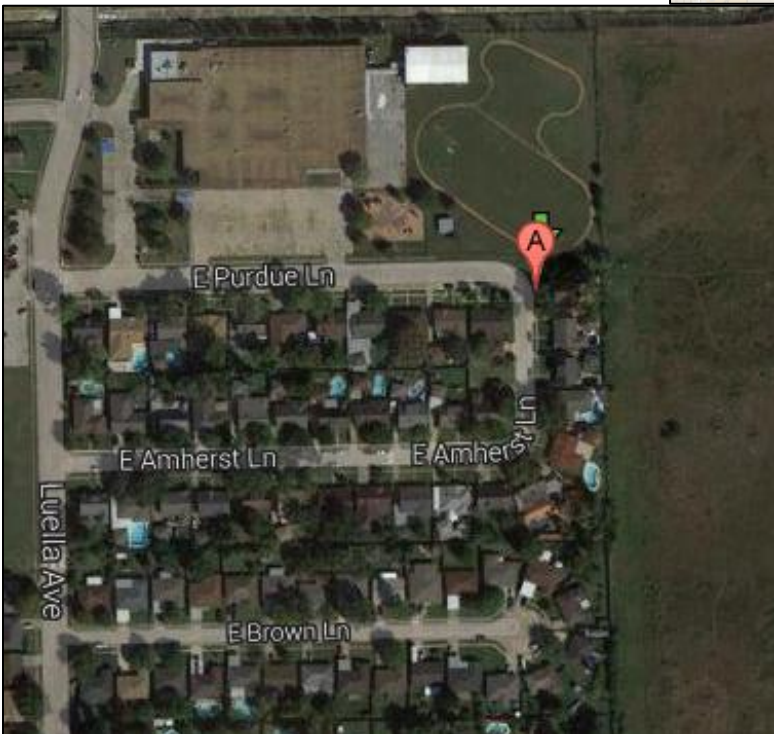
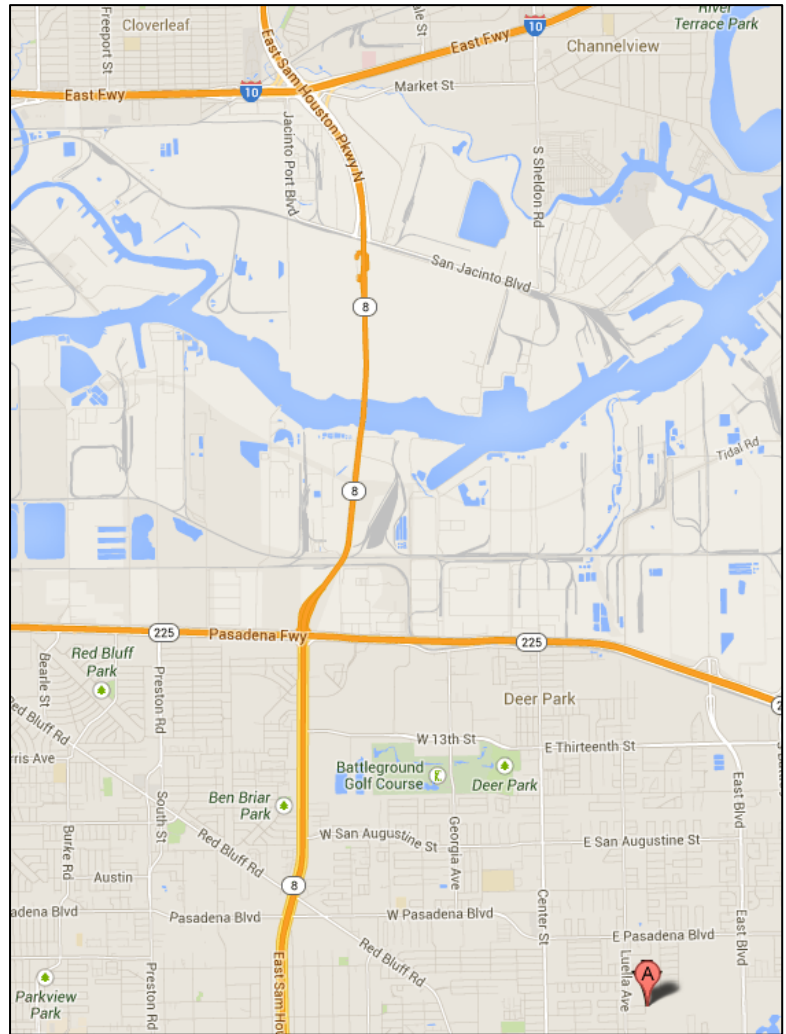
Questions today: Jennifer Lorenz, Executive Director, Bayou Land Conservancy – **281-832-2089**

# Directions to the Deer Park Prairie



## ***From I-10 and East Sam Houston Parkway***

- Head south on the Sam Houston tollway for approximately 4.3 miles.
- Take the exit toward Red Bluff Rd/Pasadena Blvd.
- Turn left onto Red Bluff Rd.
- Turn left onto Pasadena Blvd.
- After 2.3 miles turn right onto Luella Ave.
- After 0.5 miles turn left onto E. Purdue Ln.
- Meet at the house on the corner adjacent to College Park Elementary School.



## ***From 610S and TX 225 E***

- Head east on TX 225 for 3.9 miles
- Take the exit toward Pasadena Blvd/Red Bluff Rd.
- Turn right onto Red Bluff Rd.
- After 3.5 miles turn left onto Pasadena Blvd.
- After 2.3 miles turn right onto Luella Ave.
- After 0.5 miles turn left onto E. Purdue Ln
- Meet at the house on the corner adjacent to College Park Elementary.